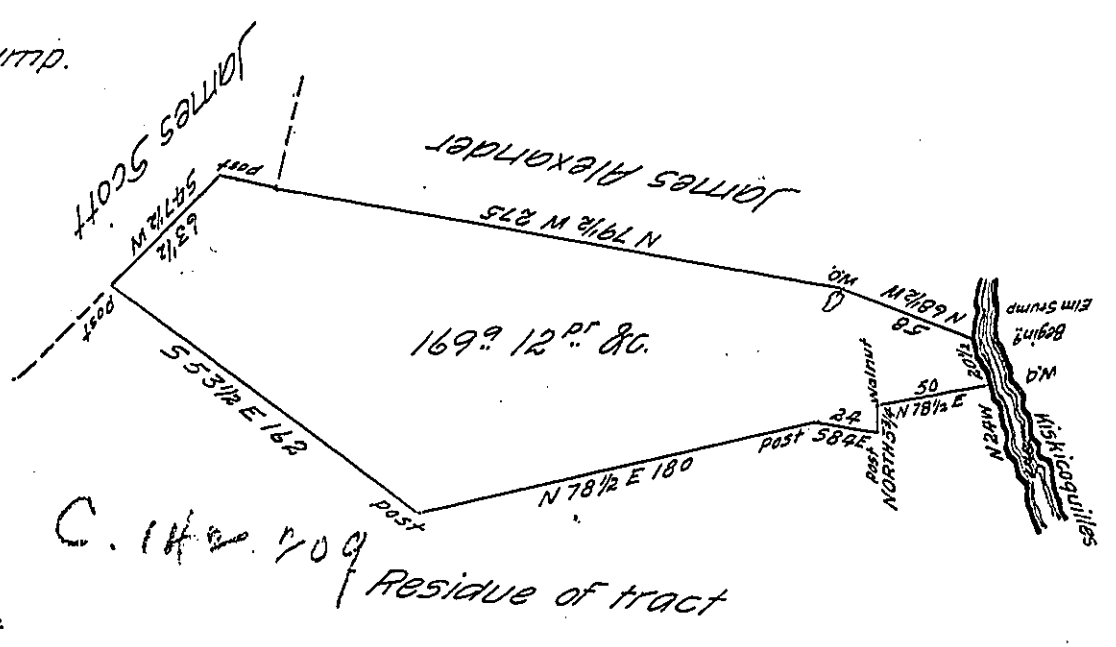


FORM NO. 1.

Beginning at Elm stump.

Courses & Distances

- N 68 1/2 E 58 a WO
 - N 79 1/2 W 275 Post
 - S 47 1/2 W 63 1/2 Post
 - S 53 1/2 E 162 Post
 - N 78 1/2 E 180 Post
 - S 84 E 24 Post
 - North 5 3/4 Walnut
 - N 78 1/2 E 50 WO
 - N 24 W 20 1/2 Elm
- the place of begin^g.



Draught of one hundred and sixty nine acres and 12 perches and the allowance of six per cent for roads &c. Part of a larger tract of land situate in Armagh Township (formerly Cumberland) now Mifflin County appears surveyed the 3^d of Nov^r 1767 said to contain 325.7 acres &c.

In pursuance of an order No. 785 granted to James Lusk dated the 6th day of August 1766 divided the 25th day of November 1801 and the above part laid off for John Wherry

To Samuel Cochran Esquire
Surv^r Gen^l of Pennsylvania

Per William Harris D.S.

IN TESTIMONY that the above is a copy of the original remaining on file in the Department of Internal Affairs of Pennsylvania, made conformably to an Act of Assembly approved the 16th day of February 1833, I have hereunto set my hand and caused the Seal of said Department to be affixed at Harrisburg, this Fifth day of March 1907

George B. Brown
Secretary of Internal Affairs.